



# Cola<sup>®</sup>Teric LMB

**REGULATORY:** TSCA, DSL, REACH, EINECS, AICS, IECSC, ENCS, ECL, NZIoC, PICCS, ASIA-PAC

**INCI NAME** Lauramidopropyl Betaine  
**CAS No.** 4292-10-8  
**EINECS No.** 224-292-6

## DESCRIPTION

**Cola<sup>®</sup>Teric LMB** is a high foaming amphoteric surfactant that displays higher foaming and viscosity building properties versus traditional cocamidopropyl betaines in shampoos, skin cleansers, and other mild personal care products. Cola<sup>®</sup>Teric LMB is stable over a wide pH range and is compatible with anionic, nonionic and cationic surfactants. Cola<sup>®</sup>Teric LMB foams well, even in high electrolyte solutions. In cosmetic formulations, Cola<sup>®</sup>Teric LMB shows a marked increase in viscosity along with increased flash foam when formulated with anionic surfactants. It is also valuable in bubble bath formulations where mildness, lime soap dispersing properties, and viscosity building characteristics are necessary.

## SPECIFICATIONS

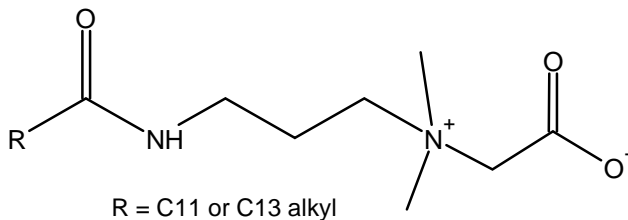
Appearance	Clear liquid
pH (10% Solution)	7 – 9
Odor	Typical
Color, Gardner '98	3 Max
Specific Gravity (25°C)	1.04
% Activity	30
Draves wetting, 1% active solutions	5.12 sec

## Low pH Shampoo Formulation

Compound	Wt %
Water	46.00
<b>Suga<sup>®</sup>Nate 124</b>	25.00
<b>Cola<sup>®</sup>Teric LMB</b>	15.00
<b>Cola<sup>®</sup>Liquid DS</b>	2.00
Glucamate DOE-120	2.00
<b>Cola<sup>®</sup>Lux LO</b>	5.00
<b>Cola<sup>®</sup>Moist 200</b>	2.00
<b>Cola<sup>®</sup>Lipid SAFL</b>	3.00

**PROCEDURE:** Blend until uniform with light heat, add sufficient citric acid to achieve pH spec.

## STRUCTURE



## Hand Soap Formulation

Compound	Wt %
Water	51.30
<b>Suga<sup>®</sup>Nate 160</b>	26.00
<b>Cola<sup>®</sup>Teric LMB</b>	8.90
<b>Cola<sup>®</sup>Lux LO</b>	7.30
NaOH, 50%	6.50 (q.s.)

**PROCEDURE:** Mix all ingredients, check pH and adjust to 5.5 - 6.5 with NaOH as needed.

## PRINCIPAL USES

Shampoos	4% – 8%
Liquid Soaps	4% – 8%
Bubble Baths	6% – 10%
Body Cleansers	10% – 15%
Lime Soap Dispersion	5% – 15%

## STORAGE AND HANDLING

Cola<sup>®</sup>Teric LMB should be stored in closed containers. Frozen material may be thawed in a warm room, venting drums while warming. A Safety Data Sheet is available upon request.

## PACKAGING

Available in 450 lb. (204 kg.) poly drums and 2300 lb. (1043 kg.) totes.

## Colonial Chemical, Inc. *Natural Surfactants*

225 Colonial Drive · South Pittsburg, TN 37380 · Phone: 423-837-8800 · Fax: 423-837-3888

Technical information contained herein is believed to be accurate. However, it is furnished without charge or obligation and is given and accepted at the recipient's sole risk. No guarantee of the accuracy of the information is made and the products discussed are sold without conditions or warranties expressed or implied. No warranties beyond the guarantee that Colonial Chemical products are manufactured to specs are expressed or implied, since the use of material is beyond our control. Purchasers should make their own tests and determine suitability of the product for their particular purposes. Nothing contained herein shall be considered a recommendation for any use that may infringe upon patent rights. Safety information regarding this product is contained in its Material Safety Data Sheet.